

# Little Bitty Reader's Log

Ages Birth through 5 years

## SUMMER READING

To complete the weekly reading log,  
choose ONE of the following:

- Share 3 hours of reading with your child  
OR
- Attend 1 library program and share 2 hours of reading or literacy activities with your child

Limit of one program counted on reading log per week.

\*program attendance will be stamped onto reading log by programmer\*

Limit of one reading log per week

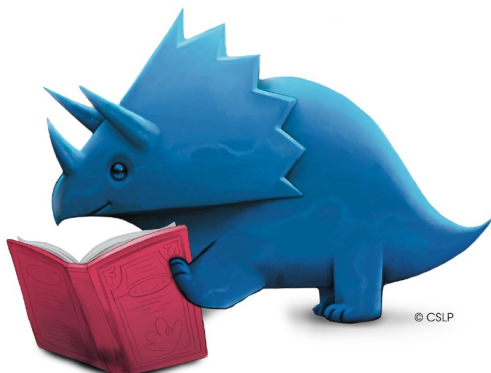
Last Day to Turn in Reading Logs is

**\*Friday July 3, 2026\***

Reading Log Redemption Dates

- Week 1: Monday, June 1 - Saturday, June 6
- Week 2: Monday, June 8 - Saturday, June 13
- Week 3: Monday, June 15 - Saturday, June 20
- Week 4: Monday, June 22 - Saturday, June 27
- Week 5: Monday, June 29 - Friday July 3

Collect small reward with each reading log turned in in-person



© CSLP

# Little Bitty Reader's Log

Ages Birth through 5 years

## SUMMER READING

To complete the weekly reading log,  
choose ONE of the following:

- Share 3 hours of reading with your child  
OR
- Attend 1 library program and share 2 hours of reading or literacy activities with your child

Limit of one program counted on reading log per week.

\*program attendance will be stamped onto reading log by programmer\*

Limit of one reading log per week

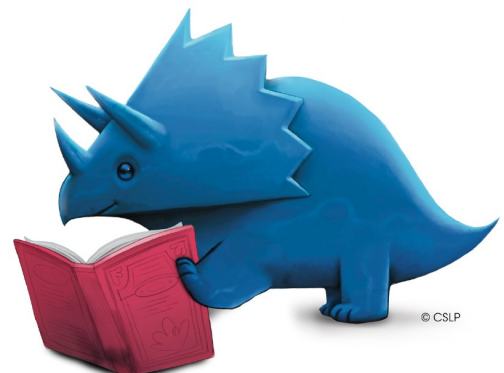
Last Day to Turn in Reading Logs is

**\*Friday July 3, 2026\***

Reading Log Redemption Dates

- Week 1: Monday, June 1 - Saturday, June 6
- Week 2: Monday, June 8 - Saturday, June 13
- Week 3: Monday, June 15 - Saturday, June 20
- Week 4: Monday, June 22 - Saturday, June 27
- Week 5: Monday, June 29 - Friday July 3

Collect small reward with each reading log turned in in-person



© CSLP

After meeting your reading/activity goal, do one of the following for a chance to win a prize:

Fill in the reading log below and return to the library  
OR

Fill in reading log on paper or online and email to the Youth Services Librarian

\*Reading log must be turned in in-person at the library to receive turn in prize\*

PCPL EMPOLYEEES AND THEIR FAMILIES ARE INELIGIBLE TO WIN PRIZES.



**Perrycountylibrary.org**



The Perry County Public Library makes every reasonable effort to provide equal access to all patrons. Please contact library@perrylib.org or call 606-436-2475 at least 72 hours prior to an event to arrange for accommodation. All facilities and meeting rooms are ADA compliant.

After meeting your reading/activity goal, do one of the following for a chance to win a prize:

Fill in the reading log below and return to the library  
OR

Fill in reading log on paper or online and email to the Youth Services Librarian

\*Reading log must be turned in in-person at the library to receive turn in prize\*

PCPL EMPLOYEES AND THEIR FAMILIES ARE INELIGIBLE TO WIN PRIZES.



**Perrycountylibrary.org**



The Perry County Public Library makes every reasonable effort to provide equal access to all patrons. Please contact library@perrylib.org or call 606-436-2475 at least 72 hours prior to an event to arrange for accommodation. All facilities and meeting rooms are ADA compliant.

First Name: \_\_\_\_\_

Last Name: \_\_\_\_\_

Phone #: \_\_\_\_\_

Age: \_\_\_\_\_

Week #: \_\_\_\_\_

- Little Bitty Prize #1
- Little Bitty Prize #2
- Little Bitty Prize #3

First Name: \_\_\_\_\_

Last Name: \_\_\_\_\_

Phone #: \_\_\_\_\_

Age: \_\_\_\_\_

Week #: \_\_\_\_\_

- Little Bitty Prize #1
- Little Bitty Prize #2
- Little Bitty Prize #3

# Elementary Reader's Log

Kindergarten - 5th Grade

## SUMMER READING

To complete the weekly reading log,  
choose ONE of the following:

- Read or be read to for 4 hours  
OR
- Attend 1 library program and read  
for 3 hours  
OR
- Read 20 picture books

Limit of one program counted on  
reading log per week.

\*program attendance will be stamped onto  
reading log by programmer\*

Limit of one reading log per week

Last Day to Turn in Reading Logs is

**\*Friday July 3, 2026\***

Reading Log Redemption Dates

- Week 1: Monday, June 1 - Saturday, June 6
- Week 2: Monday, June 8 - Saturday, June 13
- Week 3: Monday, June 15 - Saturday, June 20
- Week 4: Monday, June 22 - Saturday, June 27
- Week 5: Monday, June 29 - Friday July 3

Collect small reward with each  
reading log turned in in-person



# Elementary Reader's Log

Kindergarten - 5th Grade

## SUMMER READING

To complete the weekly reading log,  
choose ONE of the following:

- Read or be read to for 4 hours  
OR
- Attend 1 library program and read  
for 3 hours  
OR
- Read 20 picture books

Limit of one program counted on  
reading log per week.

\*program attendance will be stamped onto  
reading log by programmer\*

Limit of one reading log per week

Last Day to Turn in Reading Logs is

**\*Friday July 3, 2026\***

Reading Log Redemption Dates

- Week 1: Monday, June 1 - Saturday, June 6
- Week 2: Monday, June 8 - Saturday, June 13
- Week 3: Monday, June 15 - Saturday, June 20
- Week 4: Monday, June 22 - Saturday, June 27
- Week 5: Monday, June 29 - Friday July 3

Collect small reward with each  
reading log turned in in-person



After meeting your reading/activity goal, do one of the following for a chance to win a prize:

Fill in the reading log below and return to the library  
OR

Fill in reading log on paper or online and email to the Youth Services Librarian

\*Reading log must be turned in in-person at the library to receive turn in prize\*

PCPL EMPOLYEEES AND THEIR FAMILIES ARE INELIGIBLE TO WIN PRIZES.



**Perrycountylibrary.org**



The Perry County Public Library makes every reasonable effort to provide equal access to all patrons. Please contact library@perrylib.org or call 606-436-2475 at least 72 hours prior to an event to arrange for accommodation. All facilities and meeting rooms are ADA compliant.

After meeting your reading/activity goal, do one of the following for a chance to win a prize:

Fill in the reading log below and return to the library  
OR

Fill in reading log on paper or online and email to the Youth Services Librarian

\*Reading log must be turned in in-person at the library to receive turn in prize\*

PCPL EMPLOYEES AND THEIR FAMILIES ARE INELIGIBLE TO WIN PRIZES.



**Perrycountylibrary.org**



The Perry County Public Library makes every reasonable effort to provide equal access to all patrons. Please contact library@perrylib.org or call 606-436-2475 at least 72 hours prior to an event to arrange for accommodation. All facilities and meeting rooms are ADA compliant.

First Name: \_\_\_\_\_

Last Name: \_\_\_\_\_

Phone #: \_\_\_\_\_

Age: \_\_\_\_\_

Week #: \_\_\_\_\_

- Elementary Prize #1
- Elementary Prize #2
- Elementary Prize #3

First Name: \_\_\_\_\_

Last Name: \_\_\_\_\_

Phone #: \_\_\_\_\_

Age: \_\_\_\_\_

Week #: \_\_\_\_\_

- Elementary Prize #1
- Elementary Prize #2
- Elementary Prize #3

# Tween Reader's Log

6th - 8th Grade

# SUMMER READING

To complete the weekly reading log,  
choose ONE of the following:

-Read for 4 hours  
OR

-Attend 1 library program and read  
for 3 hours

Limit of one program counted on  
reading log per week.

\*program attendance will be stamped onto  
reading log by programmer\*

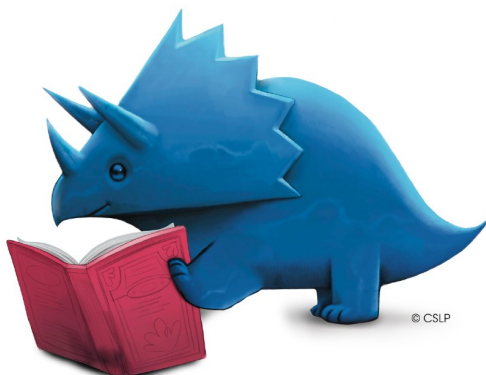
Limit of one reading log per week

Last Day to Turn in Reading Logs is  
**\*Friday July 3, 2026\***

Reading Log Redemption Dates

Week 1: Monday, June 1 - Saturday, June 6  
Week 2: Monday, June 8 - Saturday, June 13  
Week 3: Monday, June 15 - Saturday, June 20  
Week 4: Monday, June 22 - Saturday, June 27  
Week 5: Monday, June 29 - Friday July 3

Collect small reward with each  
reading log turned in in-person



# Tween Reader's Log

6th - 8th Grade

# SUMMER READING

To complete the weekly reading log,  
choose ONE of the following:

-Read for 4 hours  
OR

-Attend 1 library program and read  
for 3 hours

Limit of one program counted on  
reading log per week.

\*program attendance will be stamped onto  
reading log by programmer\*

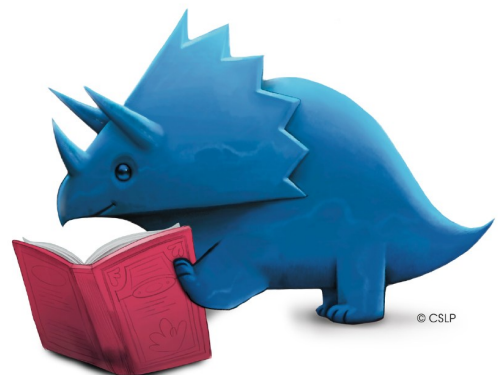
Limit of one reading log per week

Last Day to Turn in Reading Logs is  
**\*Friday July 3, 2026\***

Reading Log Redemption Dates

Week 1: Monday, June 1 - Saturday, June 6  
Week 2: Monday, June 8 - Saturday, June 13  
Week 3: Monday, June 15 - Saturday, June 20  
Week 4: Monday, June 22 - Saturday, June 27  
Week 5: Monday, June 29 - Friday July 3

Collect small reward with each  
reading log turned in in-person



After meeting your reading/activity goal, do one of the following for a chance to win a prize:

Fill in the reading log below and return to the library  
OR

Fill in reading log on paper or online and email to the Youth Services Librarian

\*Reading log must be turned in in-person at the library to receive turn in prize\*

PCPL EMPOLYEEES AND THEIR FAMILIES ARE INELIGIBLE TO WIN PRIZES.



**Perrycountylibrary.org**



The Perry County Public Library makes every reasonable effort to provide equal access to all patrons. Please contact library@perrylib.org or call 606-436-2475 at least 72 hours prior to an event to arrange for accommodation. All facilities and meeting rooms are ADA compliant.

After meeting your reading/activity goal, do one of the following for a chance to win a prize:

Fill in the reading log below and return to the library  
OR

Fill in reading log on paper or online and email to the Youth Services Librarian

\*Reading log must be turned in in-person at the library to receive turn in prize\*

PCPL EMPLOYEEES AND THEIR FAMILIES ARE INELIGIBLE TO WIN PRIZES.



**Perrycountylibrary.org**



The Perry County Public Library makes every reasonable effort to provide equal access to all patrons. Please contact library@perrylib.org or call 606-436-2475 at least 72 hours prior to an event to arrange for accommodation. All facilities and meeting rooms are ADA compliant.

First Name: \_\_\_\_\_

Last Name: \_\_\_\_\_

Phone #: \_\_\_\_\_

Age: \_\_\_\_\_

Week #: \_\_\_\_\_

Tween Prize #1

Tween Prize #2

Tween Prize #3

First Name: \_\_\_\_\_

Last Name: \_\_\_\_\_

Phone #: \_\_\_\_\_

Age: \_\_\_\_\_

Week #: \_\_\_\_\_

Tween Prize #1

Tween Prize #2

Tween Prize #3

# Teen Reader's Log

9th - 12th Grade

# SUMMER READING

To complete the weekly reading log,  
choose ONE of the following:

-Read for 4 hours  
OR

-Attend 1 library program and read  
for 3 hours

Limit of one program counted on  
reading log per week.

\*program attendance will be stamped onto  
reading log by programmer\*

Limit of one reading log per week

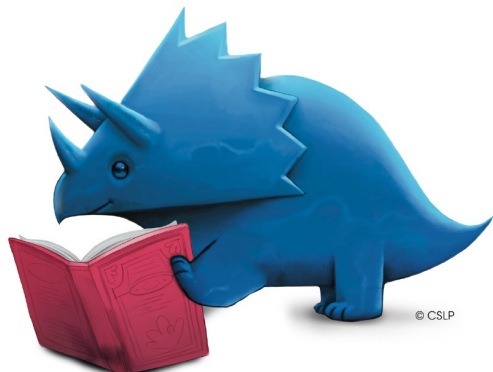
Last Day to Turn in Reading Logs is

**\*Friday July 3, 2026\***

Reading Log Redemption Dates

Week 1: Monday, June 1 - Saturday, June 6  
Week 2: Monday, June 8 - Saturday, June 13  
Week 3: Monday, June 15 - Saturday, June 20  
Week 4: Monday, June 22 - Saturday, June 27  
Week 5: Monday, June 29 - Friday July 3

Collect small reward with each  
reading log turned in in-person



# Teen Reader's Log

9th - 12th Grade

# SUMMER READING

To complete the weekly reading log,  
choose ONE of the following:

-Read for 4 hours  
OR

-Attend 1 library program and read  
for 3 hours

Limit of one program counted on  
reading log per week.

\*program attendance will be stamped onto  
reading log by programmer\*

Limit of one reading log per week

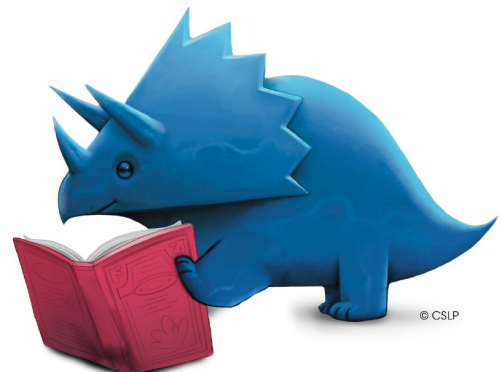
Last Day to Turn in Reading Logs is

**\*Friday July 3, 2026\***

Reading Log Redemption Dates

Week 1: Monday, June 1 - Saturday, June 6  
Week 2: Monday, June 8 - Saturday, June 13  
Week 3: Monday, June 15 - Saturday, June 20  
Week 4: Monday, June 22 - Saturday, June 27  
Week 5: Monday, June 29 - Friday July 3

Collect small reward with each  
reading log turned in in-person



After meeting your reading/activity goal, do one of the following for a chance to win a prize:

Fill in the reading log below and return to the library  
OR

Fill in reading log on paper or online and email to the Youth Services Librarian

\*Reading log must be turned in in-person at the library to receive turn in prize\*

PCPL EMPOLYEEES AND THEIR FAMILIES ARE INELIGIBLE TO WIN PRIZES.



**Perrycountylibrary.org**



The Perry County Public Library makes every reasonable effort to provide equal access to all patrons. Please contact library@perrylib.org or call 606-436-2475 at least 72 hours prior to an event to arrange for accommodation. All facilities and meeting rooms are ADA compliant.

After meeting your reading/activity goal, do one of the following for a chance to win a prize:

Fill in the reading log below and return to the library  
OR

Fill in reading log on paper or online and email to the Youth Services Librarian

\*Reading log must be turned in in-person at the library to receive turn in prize\*

PCPL EMPLOYEES AND THEIR FAMILIES ARE INELIGIBLE TO WIN PRIZES.



**Perrycountylibrary.org**



The Perry County Public Library makes every reasonable effort to provide equal access to all patrons. Please contact library@perrylib.org or call 606-436-2475 at least 72 hours prior to an event to arrange for accommodation. All facilities and meeting rooms are ADA compliant.

First Name: \_\_\_\_\_

Last Name: \_\_\_\_\_

Phone #: \_\_\_\_\_

Age: \_\_\_\_\_

Week #: \_\_\_\_\_

Teen Prize #1

Teen Prize #2

Teen Prize #3

First Name: \_\_\_\_\_

Last Name: \_\_\_\_\_

Phone #: \_\_\_\_\_

Age: \_\_\_\_\_

Week #: \_\_\_\_\_

Teen Prize #1

Teen Prize #2

Teen Prize #3